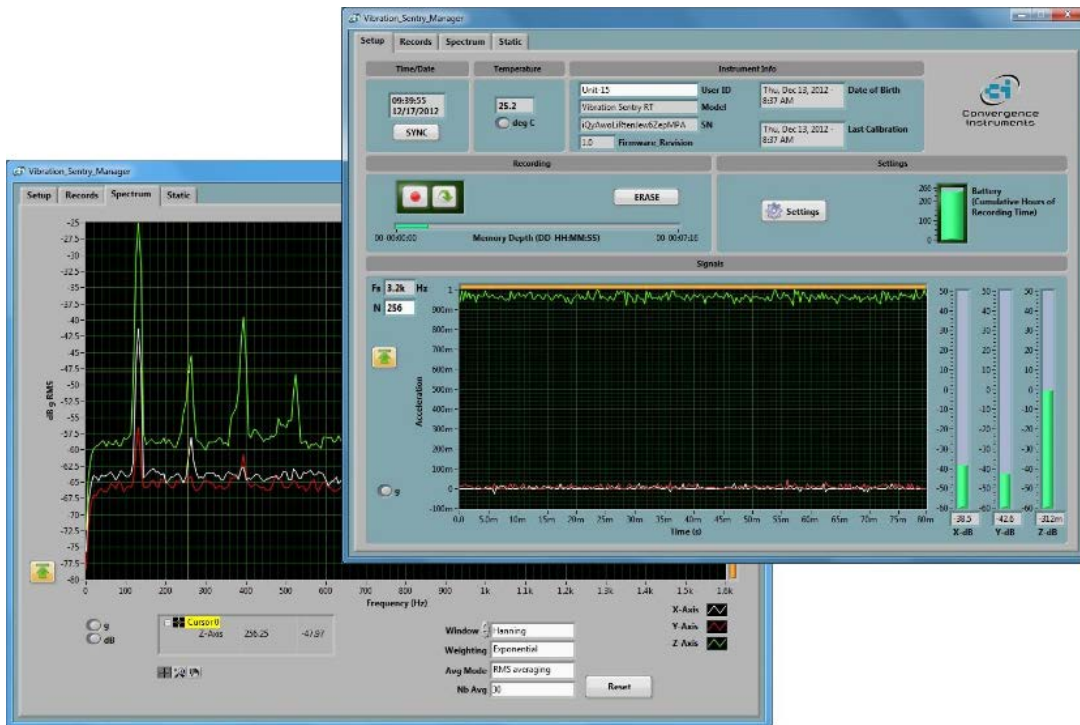




Convergence  
Instruments

# Vibration Sentry RT

## Windows XP Driver Installation Instructions



May 17 2013

Bruno Paillard

<b>1</b>	<b>INTRODUCTION</b>	<b>2</b>
<b>2</b>	<b>WINDOWS XP DRIVER INSTALLATION WIZARD</b>	<b>2</b>
<b>3</b>	<b>DRIVER UPDATE PROCEDURE</b>	<b>4</b>

## 1 Introduction

On Windows XP the *Vibration Sentry RT* USB driver must be installed manually. This manual describes the installation procedure.

**Note:** *In order to install the driver the user must be logged in with administrative privileges.*

## 2 Windows XP Driver Installation Wizard

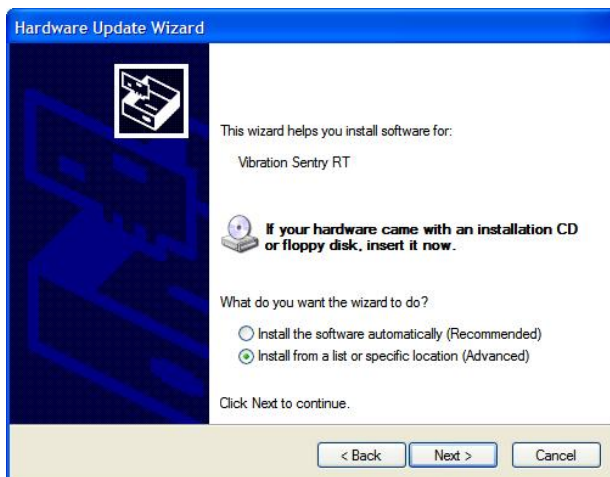
The first time the *Vibration Sentry RT* is connected into the PC and the driver is not yet installed, the driver installation wizard in Figure 1 appears:



**Figure 1**

Select *No, not this time* and click *Next*.

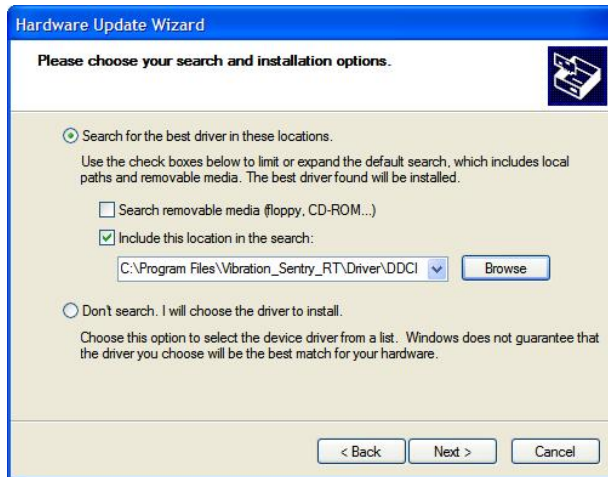
After clicking *Next*, the window shown in Figure 2 appears. Select *Install from a list or specific location* and click *Next*.



**Figure 2**

After clicking *Next*, the window in Figure 3 appears.

- Select *Search for the best driver in these locations*.
- Check only the box *Include this location in the search*.
- Click *Browse* and navigate to *C:\Program Files\Vibration\_Sentry\_RT\Driver\DDCIcd* (see Figure 4)

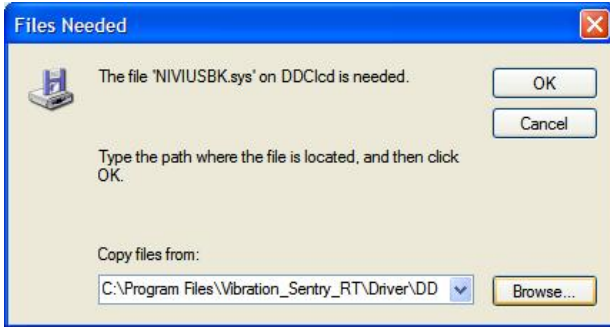


**Figure 3**



**Figure 4**

After a while, the wizard asks for the file *NIVIUSBK.sys* (see Figure 5). Click the *Browse* button and navigate to *C:\Program Files\Vibration\_Sentry\_RT\Driver\DDCIcd\x86\NIVIUSBK.sys*. Then click *OK*.



**Figure 5**

After loading the driver the window in Figure 6 appears. Click *Finish*.

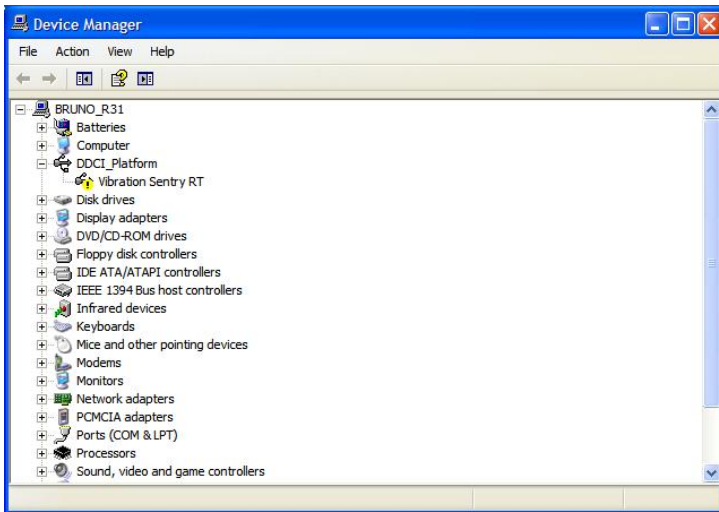


**Figure 6**

At this time the *Operation LED* should be blinking once per second, indicating that the PC has established the link with the *Vibration Sentry RT*.

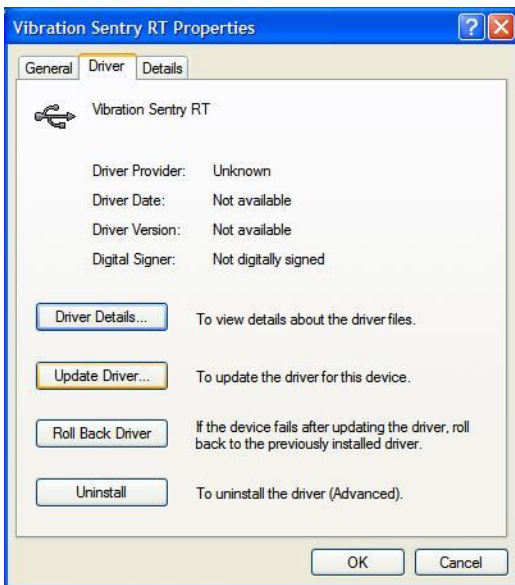
### 3 Driver Update Procedure

If for some reason the Driver Installation Wizard does not appear when the *Vibration Sentry RT* is connected to the PC, open the *Device Manager*, find the item named *Vibration Sentry RT*, and double-click it (see Figure 7).



**Figure 7**

Then select the *Driver* tab, and click on the *Update Driver* button (see Figure 8).



**Figure 8**

Then the window in Figure 2 appears. Proceed as explained in section 2.