



Convergence
Instruments

Cloud Instrument Setup

Nov 27 2018

Bruno Paillard

1	INTRODUCTION	2
2	CONFIGURING AND ACTIVATING AN INSTRUMENT ON THE CLOUD	2
3	DEACTIVATING AN INSTRUMENT FROM THE CLOUD	5

1 Introduction

A new *Cloud-Setup* function was introduced in the *Instrument Manager* application for all *WiFi™*-enabled instruments. That function automates the configuration of the instrument for use with the *cidatasolutions Cloud* service.

When using cloud reporting, the instrument must be configured, activated and deactivated using that *Cloud-Setup* function. In addition to simplifying the configuration process, it insures that there is no discrepancy between the internal configuration of the instrument and the *Cloud* database.

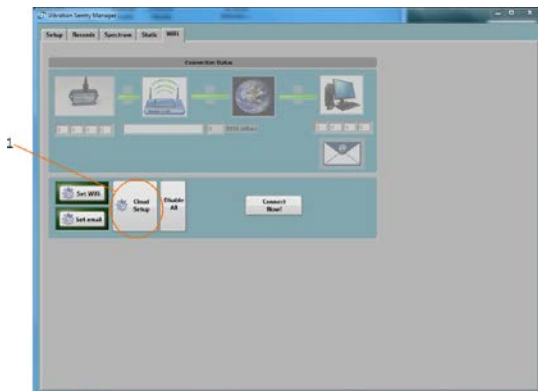
When the instrument is used on the cloud, the normal *WiFi-Setup*, *Email-Setup* and *Disable-All* functions of the *Instrument Manager* should not be used.

In addition, recording should never be started using the manual recording button. The cloud server will manage the instrument completely, including adjusting its time, erasing memory and starting the recording. All that is required is preparing the instrument settings in the instrument's web page (see below), and setting up its connection parameters.

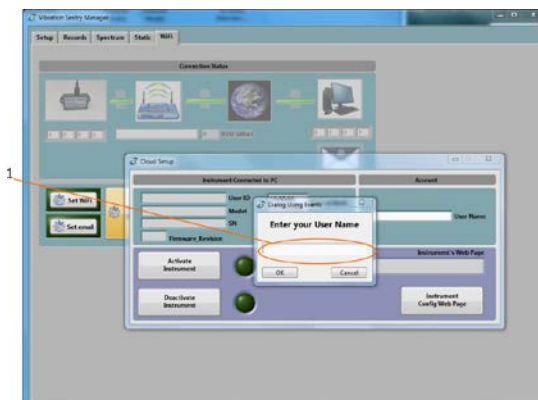
2 Configuring and Activating an Instrument on the Cloud

Once a subscription has been purchased, and an account has been created, the configuration process is very straightforward and consists of the following steps:

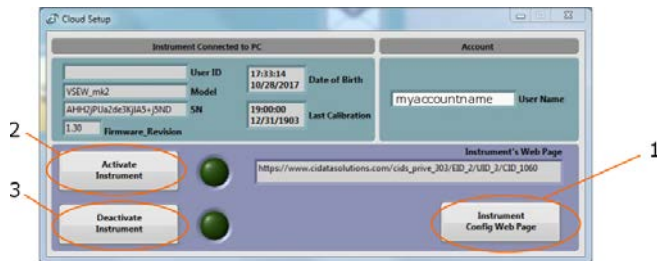
1. Connect the instrument to the PC, and open the *Instrument Manager*. Go to the *WiFi* tab



2. Press the *Cloud-Setup* button (1), the panel below is presented. Enter the account user name. This is the name of the account that must have been previously created in the cloud service.



- At this point the instrument connected to the PC may already be associated to that account. Otherwise the subscription must allow for one additional instrument. If that is the case, the instrument is automatically associated to the account, and there is no error message. The panel below is presented to the user.



- Press the *Instrument-Config-Web-Page* button (1). That action opens the default web browser on the PC, and navigates to the configuration page for that particular instrument. If that instrument was already associated to the account, that page presents the current configuration of that instrument. For a new instrument, it presents a default configuration that still needs to be adjusted (see below). That configuration page contains ALL the settings of the instrument, including its measurement settings, its *WiFi* settings, and its email alarm settings. You must adjust all required settings, and press the *Submit* button at the bottom of the web page.

- Instrument-Info:* Add/change the user-ID for that instrument, if one is required.
- Instrument-Configuration:* Adjust all the measurement parameters for the particular instrument. The setup for a *VSEW_mk2* is presented. Measurement setup options will be different for another type of instrument. For a *VSEW_mk2* it is important to set the *WiFi* action to *Recording* or *Auto-Recording*. The former begins recording immediately when the instrument initially connects to the cloud. While the latter prepares the instrument for a triggered recording, and the recording will only start when the signal passes the specified threshold.
- WiFi-Configuration:* Adjust the connection parameters for the *WiFi* access point or router to which the instrument must connect. That includes *SSID* (the name of the router or Access Point), the type of encryption, and the password if any. That also includes the connection interval. The *WiFi-Report-Active* box must be checked for the instrument to connect at regular intervals.
- Email-Configuration:* Optionally enable email alarms for battery and/or level. If level alarms are enabled, adjust the threshold.

5. Press the *Submit* button at the bottom of the web page and go back to the *Cloud-Setup* window.
6. Press the *Activate-Instrument* button (2). At that time the instrument is completely configured, and the window disappears. The green ring around the *Set-WiFi* button is lit, as well as the green ring around the *Set-Email* button if emails have been configured. The instrument may try to connect immediately, or it may try to connect after the connection interval time has elapsed. If the instrument is not actively trying to connect right away, simply press the *Connect-Now* button.



7. Once the instrument has successfully connected to the server, the *Manager* can simply be closed and the instrument disconnected from USB. The instrument will keep connecting at least at the connection intervals. It will also connect to send an alarm, or in *Auto-Recording* mode whenever a signal has been recorded.

Note that the procedure above can be applied to configure a brand new instrument, or to modify the configuration of an instrument that is already reporting to the cloud.

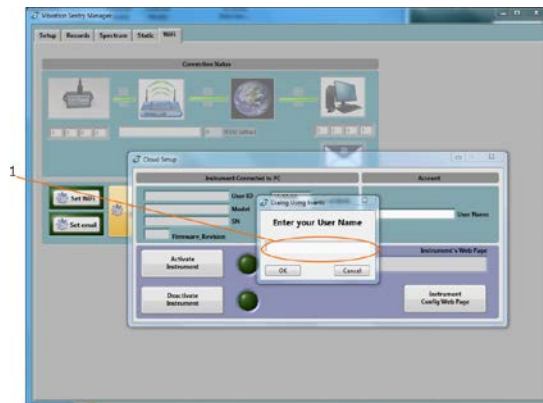
3 Deactivating an Instrument from the Cloud

Deactivation of an instrument from the cloud is even easier than activation. It begins with the same steps as for activation:

1. Connect the instrument to the PC, and open the *Instrument Manager*. Go to the *WiFi* tab (see below).



2. Press the *Cloud-Setup* button, the panel below is presented. Enter the account user name. This is the name of the account that must have been previously created in the cloud service.



3. At this point the panel below is presented to the user.



4. Simply press the *Deactivate-Instrument* button (3).